



**Mekong River Commission**

**Weekly Dry Season Situation Report in  
the Lower Mekong River Basin  
26-31 December 2023**

Prepared by  
The Regional Flood and Drought Management Centre  
01 January 2024

*The MRC is funded by contributions from its Member Countries and Development Partners, including Australia, Belgium, the European Union, Finland, France, Germany, Japan, Luxembourg, the Netherlands, Sweden, Switzerland, the United States and the World Bank.*

**Copyright © Mekong River Commission, 2020**

First published (2020)

Some rights reserved.

This work is the product of the Mekong River Commission Secretariat. While all efforts are made to present accurate information, the Secretariat does not guarantee the accuracy of the data included in this work. The boundaries, colours, denomination, and other information shown on any map in this work do not imply any judgement on the part of the MRC concerning the legal status of any territory or the endorsement or acceptance of such boundaries.

Nothing herein shall constitute or be considered to be a limitation upon or waiver of the privileges and immunities of the MRC, all of which are specifically reserved.

This publication may be reproduced in whole or in part and in any form for educational or non-profit purposes without special permission from the copyright holder, provided acknowledgement of the source is made and notification is sent to the MRC. The MRC would appreciate receiving a copy of any publication that uses this publication as a source. This publication cannot be used for sale or for any other commercial purpose whatsoever without permission in writing from the MRC.

**Title:** Weekly Dry Season situation report in the Lower Mekong River Basin for 26-31 December 2023.

ISSN: 1728-3248

Keywords: River monitoring/drought/weather/the Mekong/the Tonle Sap Lake

For bibliographic purposes, this volume may be cited as:

Mekong River Commission. (2020). *Weekly dry season situation report in the Lower Mekong River Basin for 26-31 December 2023*. Vientiane: MRC Secretariat.

Information on MRC publications and digital products can be found at  
<http://www.mrcmekong.org/publications/>

**All queries on rights and licenses should be addressed to:**

Mekong River Commission

Documentation and Learning Centre

184 Fa Ngoum Road, Unit 18, Ban Sithane Neua, Sikhottabong District, Vientiane 01000, Lao PDR

Telephone: +856-21 263 263 | E-mail: [mracs@mrcmekong.org](mailto:mracs@mrcmekong.org) | [www.mrcmekong.org](http://www.mrcmekong.org)

# Contents

- Figures..... 2**
- Table ..... 3**
- Key Messages ..... 4**
- 1 Introduction ..... 6**
- 2 General Weather Patterns ..... 7**
- 3 Water Levels in the Lower Mekong River ..... 11**
- 4 Flash Flood in the Lower Mekong Basin ..... 18**
- 5 Drought Monitoring in the Lower Mekong Basin..... 19**
- 6 Weather and Water Level Forecast and Flash Flood Information ..... 22**
  - 6.1 Weather and rainfall forecast ..... 22*
  - 6.2 Water level forecast ..... 23*
  - 6.3 Flash Flood Information..... 24*
  - 6.4 Drought forecast ..... 24*
- 7 Summary and Possible Implications ..... 27**
  - 7.1 Rainfall and its forecast ..... 27*
  - 7.2 Water level and its forecast ..... 27*
  - 7.3 Flash flood and its trends..... 28*
  - 7.4 Drought condition and its forecast ..... 28*

# Figures

- Figure 1: Summary of weather conditions over the LMB. .... 7
- Figure 2: Outlook of wet and dry conditions over the Asian countries by ASMC..... 8
- Figure 3: No tropical storm risk observed on 31 December 2023. .... 8
- Figure 4: No rainfall at key stations in the LMB during 26-31 December 2023 ..... 9
- Figure 5: Weekly rainfall distribution over the LMB during 26-31 December 2023 ..... 10
- Figure 6: Key stations and model application for River Monitoring and Flood Forecasting 11
- Figure 7. Water level at the Jinghong hydrological station up to 31 December 2023..... 12
- Figure 8. Water levels at Chiang Saen in Thailand and Luang Prabang in Lao PDR. .... 13
- Figure 9. Water levels Vientiane and Paksane in Thailand and Lao PDR. .... 14
- Figure 10: Water levels at Nakhon Phanom and Savannakhet of Thailand and Lao PDR. ... 14
- Figure 11: Water levels at Stung Treng and Kratie on the Mekong River. .... 15
- Figure 12: Seasonal change of inflows and outflows of Tonle Sap Lake. .... 16
- Figure 13. The seasonal change in monthly flow volume of Tonle Sap Lake..... 17
- Figure 14: Weekly standardised precipitation index from Dec 25 to Jan 1..... 19
- Figure 15: Weekly Index of Soil Water Fraction from Dec 25 to Jan 1. .... 20
- Figure 16: Weekly Combined Drought Index duing Dec 25-Jan 1..... 21
- Figure 17: Accumulated rainfall forecast (24 h) based on the result from the Global Forecast System (GFS) ..... 23
- Figure 18. Monthly forecast of CDI for Jan, Feb and mar 2024. .... 25

**Table**

**Table 1. The monthly change in the flow volume of Tonle Sap Lake. .... 17**

**Table 2. Weekly River Monitoring Bulletin. .... 26**

## Key Messages

Key messages for this weekly report are presented below.

### Rainfall and its forecast

- During December 26-31, no rainfall at the key stations along the Mekong River.
- The Mekong region was influenced by north-easterly monsoon wind and the high-pressure push from China. There will be no rainfall for the next 7 days over the lower part of the Mekong region from 01 to 06 January 2024.

### Water level and its forecast

- The MRC's observed water level (WL) at Jinghong showed fluctuated level between 535.56 m and 535.84 during 19 and 25 December 2023. The outflow varied from 1050.00 m<sup>3</sup>/s to 1,250.00 m<sup>3</sup>/s between 26 and 31 December 2023.
- Regardless the fluctuated outflow at Jinghong upstream, water level of monitoring station at Chiang Saen in Thailand went up about 0.05 m during the reporting period and stayed 0.58 m below its LTA, considered normal. Water levels at the monitoring stations at Chiang Khan in Thailand decreased about 0.26 m, staying 0.79 m below its LTA value, while at Vientiane in Lao PDR it was stable at 1.64 m and stayed about 0.48 m lower than its LTA value. The current WL at Nong Khai in Thailand increased 0.11 m and stay about 0.93 m lower than its LTA value, while at Paksane in Lao PDR it was up about 0.05 m and stayed 0.72 m lower than its LTA level, which considered low level. Water levels from Thailand's Nakhon Phanom to Savannakhet increased between 0.06 m and 0.16 m, while at Khong Chiam in Thailand and Paske in Lao PRD decreased from 0.05 m to 0.08 m. Water levels at these stations are staying lower than their LTA values. Water levels from the stretches of the river at Stung Treng is about 0.05 m higher than its LTA value, while at Kratie in Cambodia, moreover, is 0.26 m lower than its LTA value due to low contributed inflows and no rainfall from the upstream part (at Pakse and 3S area in Viet Nam). WL at Kompong Cham is about 0.83 m lower than its LTA value.
- The flow volume of the Tonle Sap Lake was lower than its LTA (about 87%) up to 31 December 2023, considered normal.
- The current water levels for most of the stations are below their LTA value, except at Luang Prabang. Being situated between the upstream (Nam Beng, Nam Ou, Nam Suong, and Nam Khan) and downstream (Xayaburi) hydropower dams, the Luang Prabang station has a unique characteristic as it is influenced by the operations of all its surrounding dams.
- Water levels at the 2 tidal stations at Tan Chau and Chau Doc fluctuated between their LTA and minimum values, during this monitoring period.
- Over the next seven days, the water levels across most monitoring stations are expected to go down and will continue lower than their long-term average value in most stations.

## **Drought condition and its forecast**

- During Dec 25-Jan 1, the LMB was facing from moderate to severe drought mainly in the middle and southern parts covering Phongsaly, Vientiane, Xaysomboun, Borikhamxay, Khammuane, Savanakhet, Saravane, Champasack, Attapeu, Xekong, Bueng Kan, Nakhon Phanom, Roi Et, Yasothon, Amnat Charoen, Si Saket, Surin, Buri Ram, Banteay Meanchey, Preah Vihear, Kampong Thom, Stung Treng, Ratana Kiri, Otdar Meanchey, Pailin, Siem Reap, Pursat, Battambang, Kratie, Ratanakiri, Mondulkiri, Prey Veng, Kampong Cham, Kampong Speu, Tbong Khmum, Gia Lai, and Kon Tum. The drought phenomenon was caused by over dried soil moisture which is considered normal during dry season.
- In January and February, the LMB is likely normal in most parts of the region. While in March some moderate drought is likely taking place in Loei, Chaiyaphum, Nakhon Ratchasima, Kratie, and Ratanakiri provinces.



# 1 Introduction

This Weekly Dry Season Situation Report presents a preliminary analysis of the weekly hydrological situation in the Lower Mekong River Basin (LMB) for **26-31 December 2023**. The trend and outlook for water levels are also presented.

This analysis is based on the daily hydro-meteorological data provided by the Mekong River Commission (MRC) Member Countries – Cambodia, Lao PDR, Thailand, and Viet Nam – and on satellite data. Water level indicated in this report refers to an above zero gauge of each station.

The report covers the following topics that are updated weekly:

- General weather patterns, including rainfall patterns over the LMB.
- Water levels in the LMB, including in the Tonle Sap Lake.
- Flash flood and drought situation in the LMB.
- Weather, water level and flash flood forecast, and
- Possible implications.

Mekong River water levels are updated daily and can be accessed from:  
[http://ffw.mrcmekong.org/bulletin\\_wet.php](http://ffw.mrcmekong.org/bulletin_wet.php).

Drought monitoring and forecasting information is available at:  
<http://droughtforecast.mrcmekong.org>

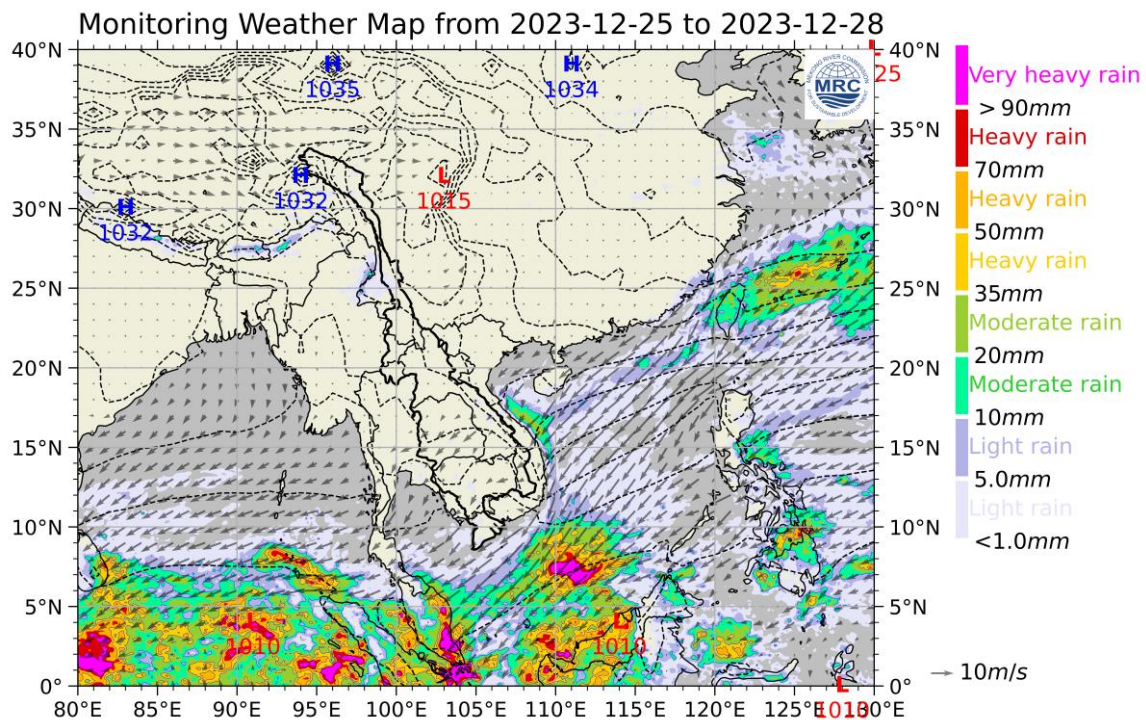
Flash flood information is accessible at: <http://ffw.mrcmekong.org/ffg.php>

## 2 General Weather Patterns

The weather outlook bulletins for two months (November and December) and the weather maps issued by the Thai Meteorological Department (TMD) were used to verify weather conditions in the LMB.

Since the end of November 2023, the warm and wet weather have appeared because the influentially high-pressure air mass areas prevail over the LMB, with gradually decreasing water levels in both mainstream and tributaries. The data from the TMD predict that high pressure of air-mass will continue with warm weather condition in the upper part of Thailand, Lao PDR and Viet Nam. As a result, the temperature in the upper part of Thailand will drop gradually as commonly warm and cold weather, specifically at the upper portion of the northern and north-eastern parts together with cold weather in mountainous areas (within the Mekong region).

[Figure 1](#) presents the weather map during 25-28 December 2023, indicating no high or low pressures cell active in the South-Sea of Viet Nam and the LMB. Generally, the Mekong region was influenced by north-easterly monsoon wind and the high-pressure push from China. Under this weather condition, no rainfall occurred in most parts of LMB, but it's rather windy from central to southern parts of the basin.



**Figure 1: Summary of weather conditions over the LMB.**

According to the ASEAN Specialised Meteorological Centre (ASMC), a highest probability of warm condition is predicted over the lower part of the Mekong region covering Lao PDR and Thailand from 25 Dec 2023 to 07 Jan 2024. **Figure 2** shows the outlook of weather condition from 25 Dec 2023 to 07 Jan 2024 in Southeast Asia based on results from the NCEP model (National Centres for Environmental Prediction).

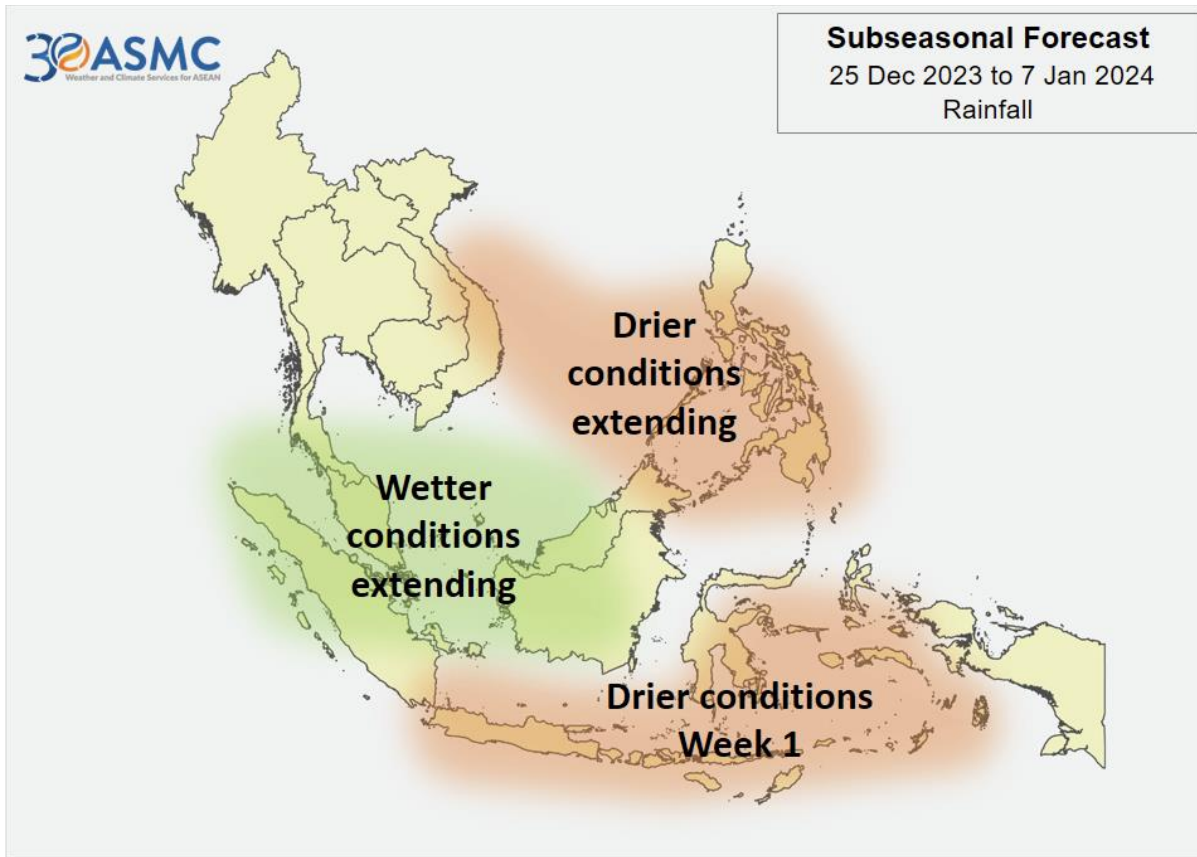


Figure 2: Outlook of wet and dry conditions over the Asian countries by ASMC.

**Tropical depressions (TD), tropical storms (TS) and typhoons (TY)**

There was a tracking storm covering the LMB during 26-31 December 2023, showing no low or high-pressure line over the LMB. No movement of storm was detected over South-Sea of Viet Nam as displayed in [Figure 3](#).

**Active system as of 31 December 2023, 7:27 GMT**

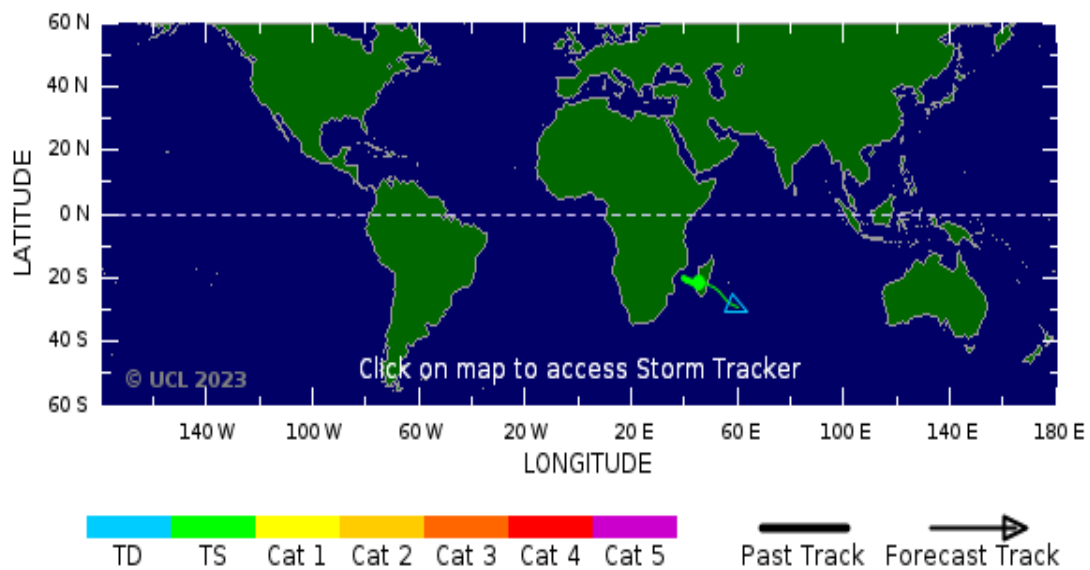
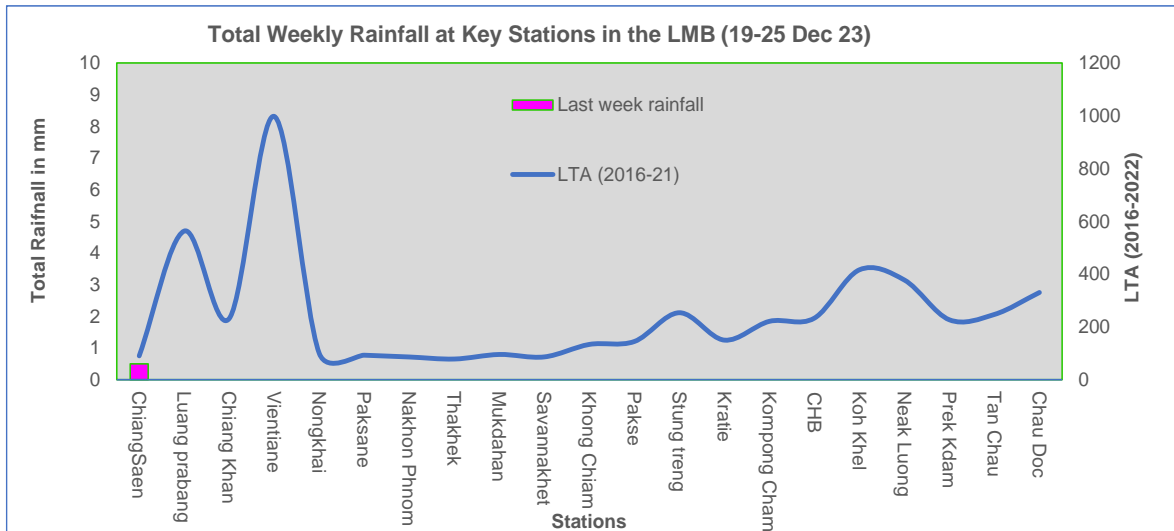


Figure 3: No tropical storm risk observed on 31 December 2023.

## Rainfall patterns over the LMB

This week from 26 to 31 Dec 2023, no rainfall was observed at the stations along the Mekong River of the Lower Mekong Basin (LMB). This week was considered no rainfall in the upper and low-lying area of the Mekong River. No rainfall is predicted over in the Mekong region, which indicated the sign of hot weather process. The total rainfall of this week report in the Mekong region compared with last week and its long-term-average (LTA) is showed in [Figure 4](#).



**Figure 4: No rainfall at key stations in the LMB during 26-31 December 2023**

To verify area rainfall distribution, [Figure 5](#) shows a map of the weekly accumulated rainfall based on the observed data provided by the MRC Member Countries – Cambodia, Lao PDR, Thailand, and Viet Nam – from 26 to 31 December 2023.

Absence of rain this week at some parts in the LMB is an indication of the nearly end of the rainy season in the LMB.

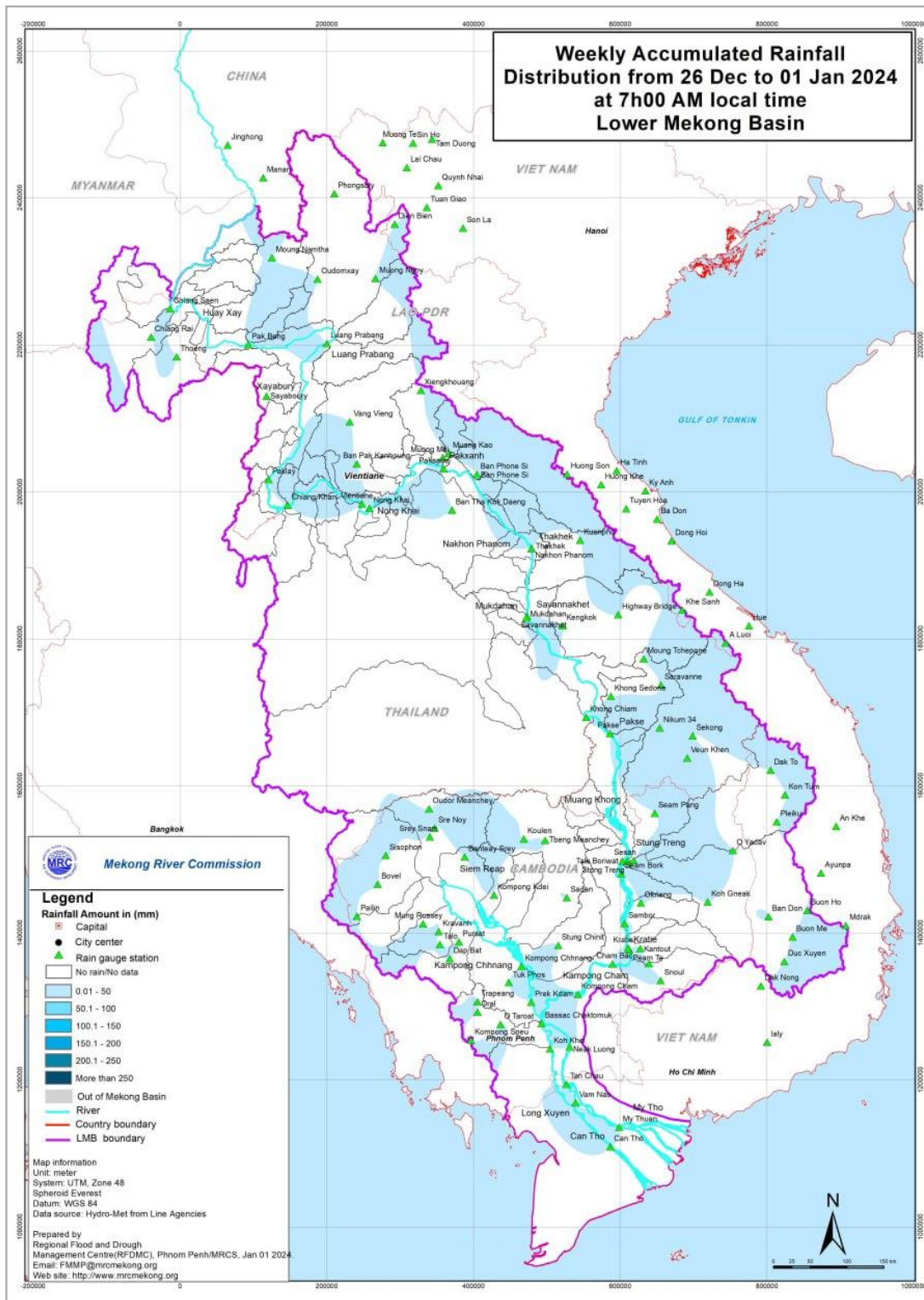


Figure 5: Weekly rainfall distribution over the LMB during 26-31 December 2023

### 3 Water Levels in the Lower Mekong River

The hydrological regimes of the Mekong mainstream are illustrated by recorded water levels and flows at key mainstream stations: at Chiang Saen to capture mainstream flows entering from the Upper Mekong Basin (UMB); at Vientiane to present flows generated by climate conditions in the upper part of the LMB; at Pakse to investigate flows influenced by inflows from the larger Mekong tributaries; at Kratie in Cambodia to capture overall flows of the Mekong Basin; and at Viet Nam’s Tan Chau and Chau Doc to monitor flows to the Delta.

The key stations along the LMB and their respective model application for River Flood Forecasting during the wet season from June to October and River Monitoring during the dry season from November to May are presented in [Figure 6](#). The hydrograph for each key station is available from the MRC’s River Flood Forecasting: <http://ffw.mrcmekong.org/overview.php>. The weekly water levels and rainfall at each key station are summarised in **Annex A**.

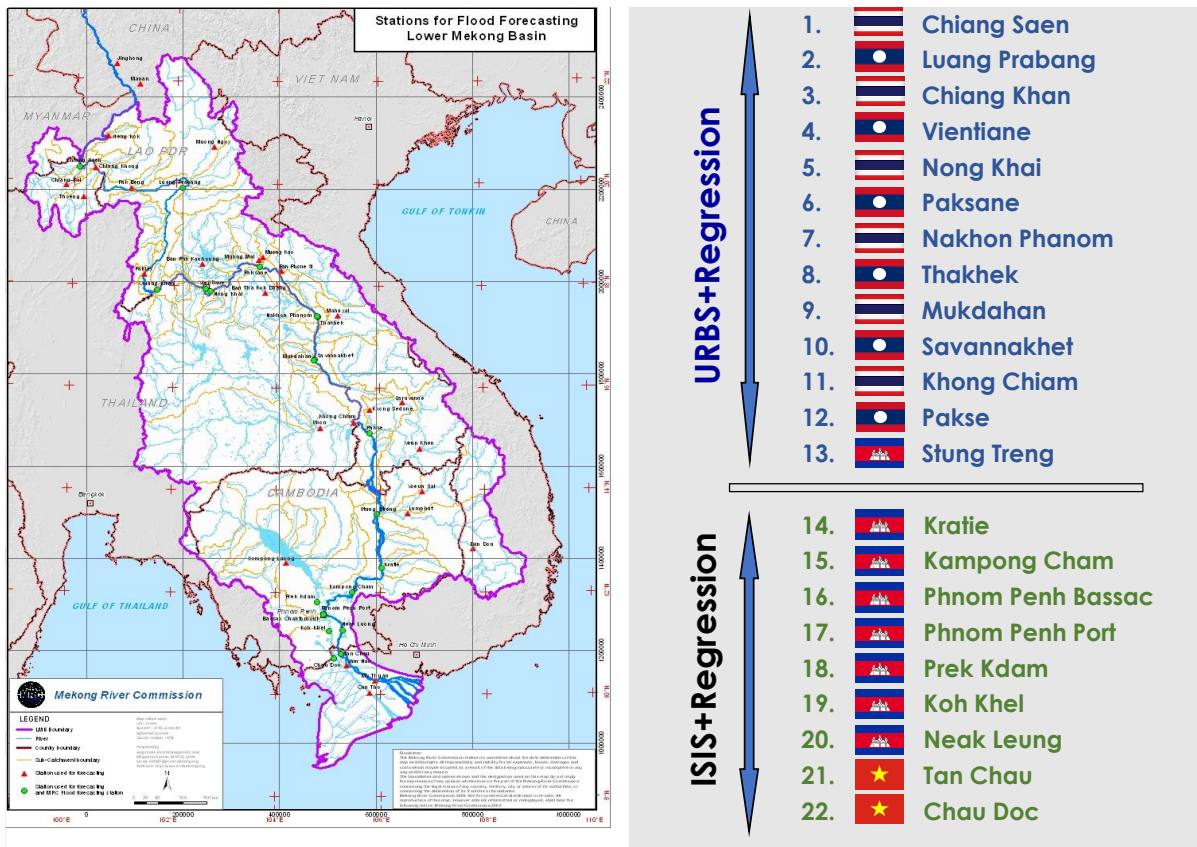
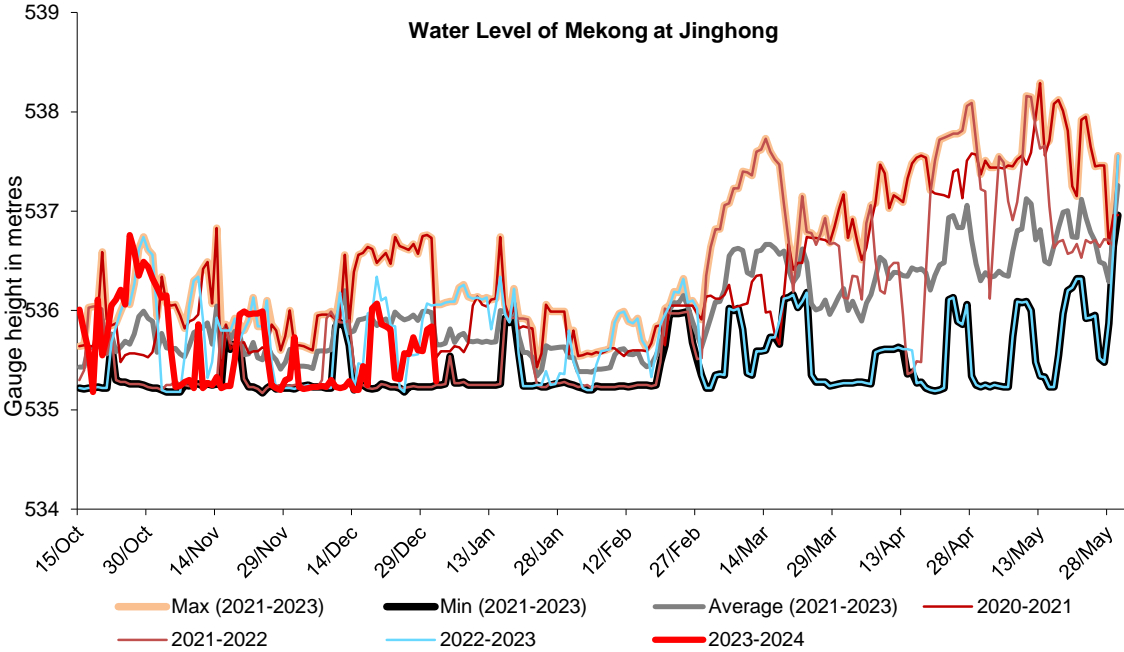


Figure 6: Key stations and model application for River Monitoring and Flood Forecasting

The MRC’s observed water level (WL) at Jinghong showed the low fluctuated values between 535.56 m and 535.84 m from 26 to 31 December 2023 (recorded on 7:00 am). The outflow varied from 1050.00 m<sup>3</sup>/s to 1,250.00 m<sup>3</sup>/s between 26 and 31 December 2023.

[Figure 7](#) below presents water level that decreased at the Jinghong hydrological station<sup>1</sup>, indicating the trend of fluctuating water level up to 31 December 2023.



**Figure 7. Water level at the Jinghong hydrological station up to 31 December 2023.**

Regardless the fluctuated outflow from Jinghong upstream, water level of monitoring station at Chiang Saen in Thailand increased 0.05 m (nearly stable) from 26 to 31 Dec 2023 and stayed about 0.58 m lower than its long-term average (LTA), which considered normal. Water levels at the monitoring station at Chiang Khan in Thailand decreased about 0.26 m and stayed 0.79 m lower than its LTA, while at Vientiane in Lao PDR the water levels were almost stable at 1.64 m and stayed about 0.48 m lower its LTA value, considered low water levels. The current water levels at Nong Khai in Thailand, however, increased about 0.11 m and stayed 0.93 m lower than its LTA value. WLS at these stations were considered low water levels. Water levels from Nakhon Phanom to Savannakhet increased between 0.06 m and 0.13 m, while at Khong Chiam and Pakse decreased in between 0.05 m and 0.08 m. Water levels at these stations are staying below their LTA values. Water levels in Cambodia from the stretches of the river at Stung Treng was stable at 3.08 m and at Kratie were increased about 0.16 m. The water levels at Kompong Cham increased about 0.11 m due to low inflow and no rainfall from the upstream part. WLS at Stung Treng stayed about 0.05 m higher than its LTA value and at Kratie it was 0.26 m lower than its LTA value, respectively. WL at Kompong Cham was about 0.83 m lower than its LTA value.

Based on hydrological phenomenon, the contribution of inflow water from the upstream of Lancang-Mekong in China to the Mekong mainstream is about 16% in total during the wet

<sup>1</sup> Near-real time data of hydro-meteorological monitoring at the Jinghong hydrological station is available at <https://portal.mrcmekong.org/monitoring/river-monitoring-telemetry>.

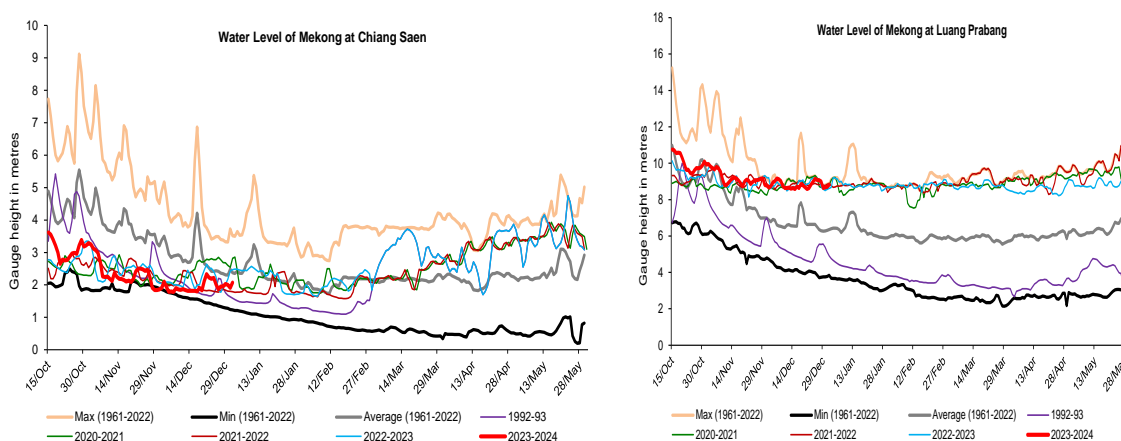
season from June to October and about 25% in total during the dry season from November to May. The whole inflow of water into the LMB is influenced by rainfall at the Mekong mainstream and its tributaries during the wet season.

### Chiang Saen and Luang Prabang

Water level during 26-31 Dec 2023 at Thailand’s Chiang Saen increased in between 1.83 m to 2.03 m, staying about 0.58 m lower than its Long-Term-Average (LTA) during the report period. This value is considered normal. When compared to last week, this week’s water level is relatively higher.

Water level at the Luang Prabang station in Lao PDR was decreased about 0.38 m, during the reporting period. Compared to last week, the water level shows about 2.39 m higher than its LTA value and staying about 0.15 m below its historical maximum value. The water levels at Chiang Saen and Luang Prabang are shown in [Figure 8](#) below.

Being situated between the upstream (Nam Beng, Nam Ou, Nam Suong, and Nam Khan) and downstream (Xayaburi) hydropower dams, the Luang Prabang station has a unique characteristic as it is influenced by the operations of all its surrounding dams. **Thus, the water level at this station can possibly change very rapidly during the early dry season.**

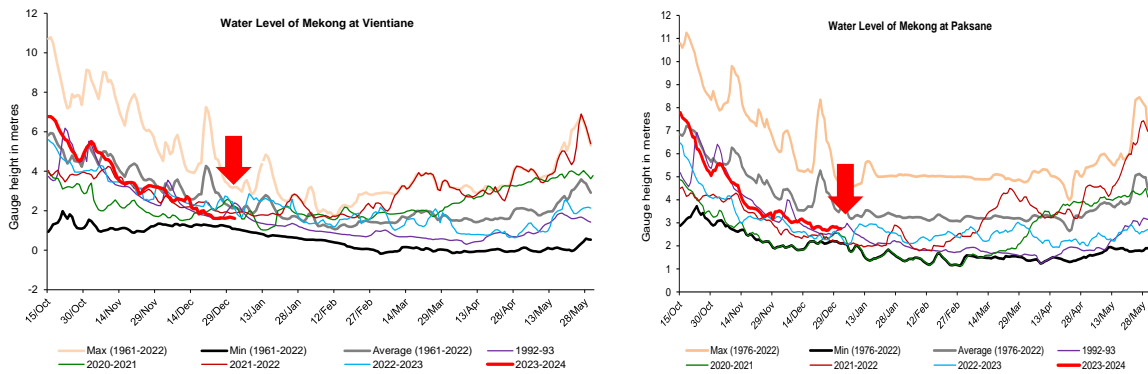


**Figure 8. Water levels at Chiang Saen in Thailand and Luang Prabang in Lao PDR.**

### Chiang Khan, Vientiane-Nong Khai and Paksane

The water level at Chiang Khan in Thailand (downstream of the Xayaburi dam) decreased about 0.26 m, during the reporting week. It showed 0.79 m below its LTA. However, the water level downstream at Vientiane in Lao PDR was stable at 1.64 m and stayed about 0.48 m lower than its LTA during 26-31 December 2023. At Nong Khai station in Thailand, the water level was increased about 0.11 m during the reporting period. It showed 0.93 m lower than its LTA value, but still considered low water level. At Paksane in Lao PDR, water level increased about 0.11 m staying about 0.93 m lower than its LTA value. The recently decreased water levels were obviously due to no rainfall and low inflow from upstream and water operation from upstream in the sub-catchment area. The water levels at Vientiane and Paksane are shown in [Figure 9](#) below.

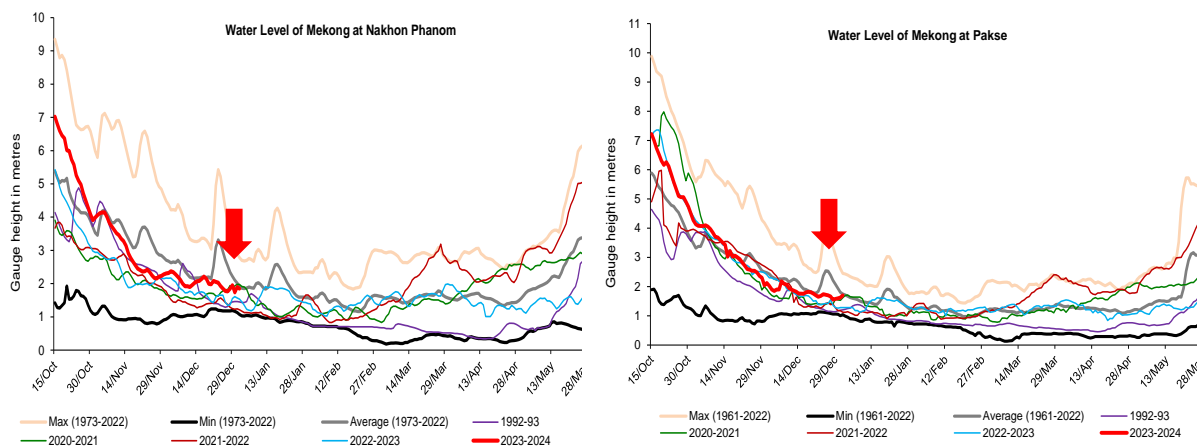




**Figure 9. Water levels Vientiane and Paksane in Thailand and Lao PDR.**

### Nakhon Phanom to Pakse

Moreover, water levels from Nakhon Phanom in Thailand to Savannakhet in Lao PDR increased between 0.06 m and 0.13 m, while at Khong Chiam in Thailand and at Paske in Lao PDR decreased from 0.05 m to 0.08 m. Water levels for these stations are staying lower than their LTA levels, considering low. [Figure 10](#) shows the water levels at Nakhon Phanom and Pakse stations.

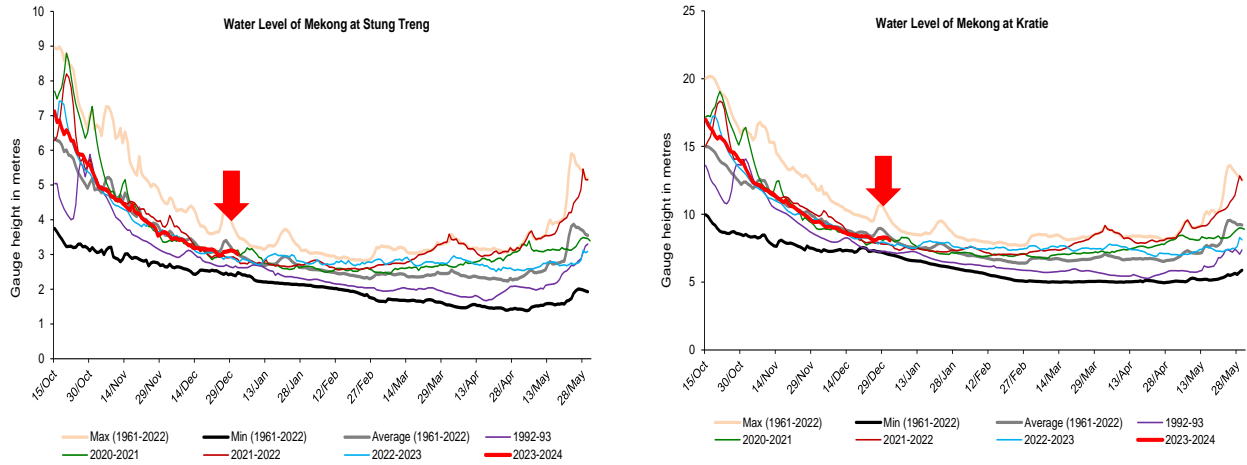


**Figure 10: Water levels at Nakhon Phanom and Savannakhet of Thailand and Lao PDR.**

### Stung Treng to Kompong Cham/Phnom Penh to Koh Khel/Neak Luong

Due to the fact that there was no rainfall from the upstream part of the Mekong River and the 3S river (Sekong, Se San, and Sre Pok), the water levels from Stung Treng to Kratie in Cambodia increasing during 26-31 Dec 2023, respectively. The water level at Stung Treng was stable at 3.08 m, while at Kratie it increased about 0.16 m. Water levels at Stung Treng is staying about 0.05 m higher than its LTA value and at Kratie is about 0.26 m lower than its LTA value. Water levels at these two stations were considered normal during the starting dry season (as showed in [Figure 11](#)).

This week, the water levels at Kompong Cham were up about 0.11 m and stayed 0.83 m below its LTA value, which considered low.



**Figure 11: Water levels at Stung Treng and Kratie on the Mekong River.**

At Chaktomuk on the Bassac River, the water level was up by about 0.05 m and stayed 0.55 m lower than its LTA value; while at Koh Khel, water level increased about 0.06 m, staying 0.52 m lower than its LTA value. It was observed that the WLs at Koh Khel and Neak Luong were affected by tidal from downstream stations of Tan Chau and Chau Doc in Viet Nam, during the dry season period. Moreover, water level at Prek Kdam on the Tonle Sap Lake decreased about 0.19 m and stayed about 0.65 m lower than its LTA value. The water level at the Tonle Sap Lake (observed at Kompong Luong) was similar to Prek Kdam station’s water level. The recently decreased water level was due to no rain and inflow contributed from upstream of the Tonle Sap Lake area during the reporting period. The water level at the Tonle Sap Lake (observed at Kompong Luong) followed the same trend of Prek Kdam station’s water level. Water levels at these stations (Chaktommuk, Phnom Penh Port and Neak Luong) were mostly staying lower than their LTA level, which still considered normal water level.

### Tidal stations at Tan Chau and Chau Doc

Like last week, the water levels from 26 to 31 December 2023 at Viet Nam’s Tan Chau and Chau Doc were fluctuating between their LTA values due to daily tidal effects from the sea. The fluctuated levels were between 1.21 m and 1.85 m, which were slightly lower than their LTA level, which considered normal at this stage. The current water levels at Tan Chau and Chau Doc are lower than their LTA values.

### The Tonle Sap Flow

At the end of the wet season, when water levels along the Mekong River subside, the outflows of the Tonle Sap Lake return to the Mekong River and then to the Delta. This phenomenon normally takes place between September and October. Based on flow observation at Prek Kdam, the outflow of the Tonle Sap Lake took place since 23 October 2023.

The flows of the Tonle Sap Lake were calculated based on a formula of rating-curves using by different water levels at Kompong Luong and Phnom Penh Port for slop and Prek Kdam as cross-section of the Lake. The formula of flows at the Tonle Sap Lake is as follows:

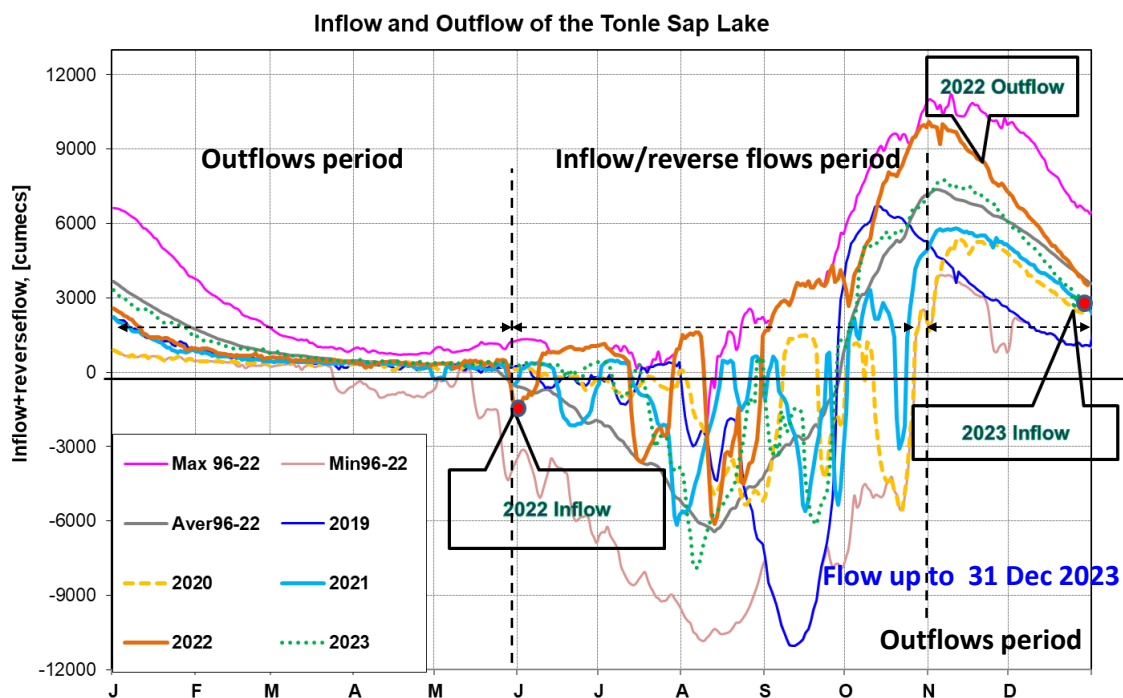
$$\text{Flows} = (\text{WL at Prek Kdam})^{1.2} * \text{SQRT} (\text{WL difference between PP port and Kampong Luong})$$

Where, WL is water level in m (msl).

[Figure 12](#) shows the seasonal changes of the inflow/reverse flow and the outflow of the TSL at Prek Kdam in comparison with the flows of 2019, 2021 and 2022, and their LTA level (1997–2022). Up to December 31 of this reporting period, **it was observed that the main outflow to Tonle Sap Lake decreased due to no rainfall and less inflows from upstream.** This decreased outflow of Tonle Sap Lake was most likely caused by low inflows and no rainfall from the catchment area. Up to this date, the outflow from the Tonle Sap Lake condition in 2023 is higher than 2020, 2021 and 2022 outflow conditions. It is noted that the outflow in 2023 is lower than its LTA up to 31 December 2023. For next week, low rainfall is forecasted for the Tonle Sap area; thus, the outflow into the the Tonle Sap Lake is likely to decrease from the current level.

[Figure 13](#) shows seasonal changes in monthly flow volumes up to 31 December 2023 for the Lake compared with the volumes in 2020, 2021, 2022 and their LTA, and the fluctuation levels (1997–2022). It shows that up to 31 December 2023, **the water volume of the Tonle Sap Lake was staying lower than its LTA (about 87 %) and 2022 but higher than 2020 and 2021 during the same period.** The figure is displayed in [Table 1](#), which indicates that the Tonle Sap Lake has been affected by water levels at the Mekong River and its tributaries and rainfall in the surrounding sub-catchments and ***considered normal***.

This demonstrates the influence of the relationships between the reverse flows, water levels of the Mekong River, inflows from tributaries, and the flow direction in the complex hydraulic environment of the Tonle Sap Lake during the wet and dry seasons. The data show that about half of the annual inflow volume into the Tonle Sap Lake has originated from the Mekong mainstream. Thus, flow alterations in the mainstream could have direct impact on the Tonle Sap Lake water levels and on its hydrology.



**Figure 12: Seasonal change of inflows and outflows of Tonle Sap Lake.**

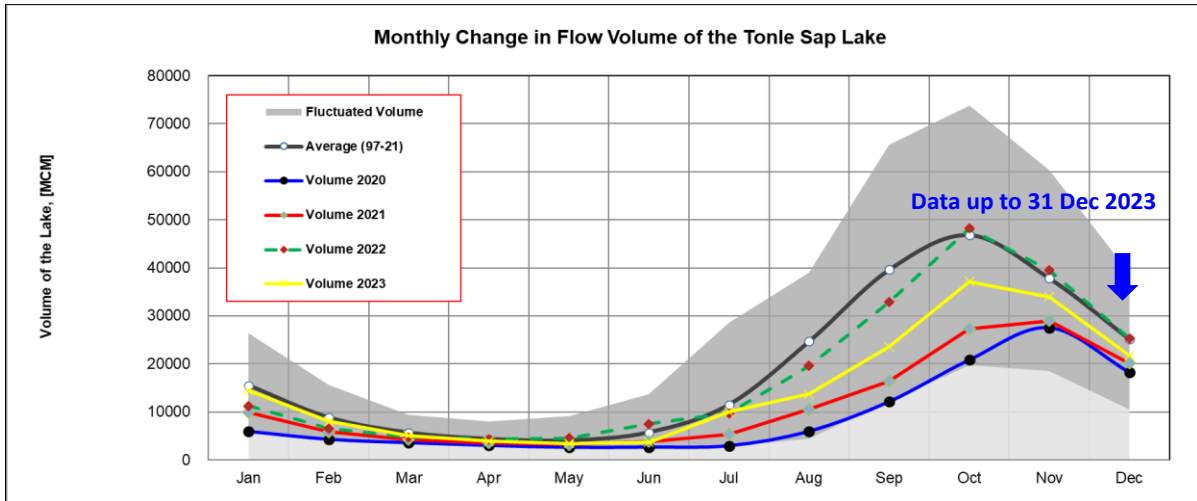


Figure 13. The seasonal change in monthly flow volume of Tonle Sap Lake.

Table 1. The monthly change in the flow volume of Tonle Sap Lake.

Month	LTA (97-22) [MCM]	Max Volume [MCM]	Min Volume [MCM]	Volume 2019 [MCM]	Volume 2020 [MCM]	Volume 2021 [MCM]	Volume 2022 [MCM]	Volume 2023 [MCM]	Volume in 2023 [%], compared with its LTA
Jan	15523.23	26357.53	5906.80	10285.31	5906.80	9923.80	11214.32	14422.11	92.91
Feb	8837.89	15596.22	4198.60	6019.30	4264.19	5832.97	6558.79	8069.29	91.30
Mar	5654.18	9438.24	3347.07	4354.62	3553.99	4264.88	4736.52	5080.64	89.86
Apr	4346.65	8009.14	2866.91	3667.47	2992.61	3556.68	4288.31	3884.16	89.36
May	4030.23	9176.93	2417.81	3266.43	2594.92	3240.78	4556.83	3438.66	85.32
Jun	5708.30	13635.01	2468.70	3517.06	2641.88	3798.29	7489.04	3689.97	64.64
Jul	11493.25	28599.56	2925.86	4001.99	2925.86	5346.73	9703.79	9953.41	86.60
Aug	24666.69	39015.12	4433.46	7622.71	5941.07	10547.80	19554.70	13694.57	55.52
Sep	39634.03	65632.35	12105.31	24194.19	12105.31	16382.34	32860.34	23550.60	59.42
Oct	46873.44	73757.23	19705.50	30358.38	20799.13	27318.21	48199.12	37141.40	79.24
Nov	37823.16	60367.33	18534.61	19112.65	27546.80	28982.93	39452.53	33929.52	89.71
Dec	25126.11	38888.95	10563.49	10577.29	18251.65	20170.76	25346.65	21757.70	86.59
	Critical situation, compared with historical Min values								
	Normal condition, compared with LTA (Long term average)								
	Low volume situation, compared with LTA values								
Unit: Million Cubic Meter (1 MCM= 0.001 Km <sup>3</sup> )				LTA: Long-Term-Average					

## **4 Flash Flood in the Lower Mekong Basin**

During the weekly monitoring period from 26 - 31 December, the LMB received no rain to light rain in some areas.

According to the MRC-Flash Flood Guidance System (MRC-FFGS) and analysis, flash flood events were not detected during the reporting period over the LMB.

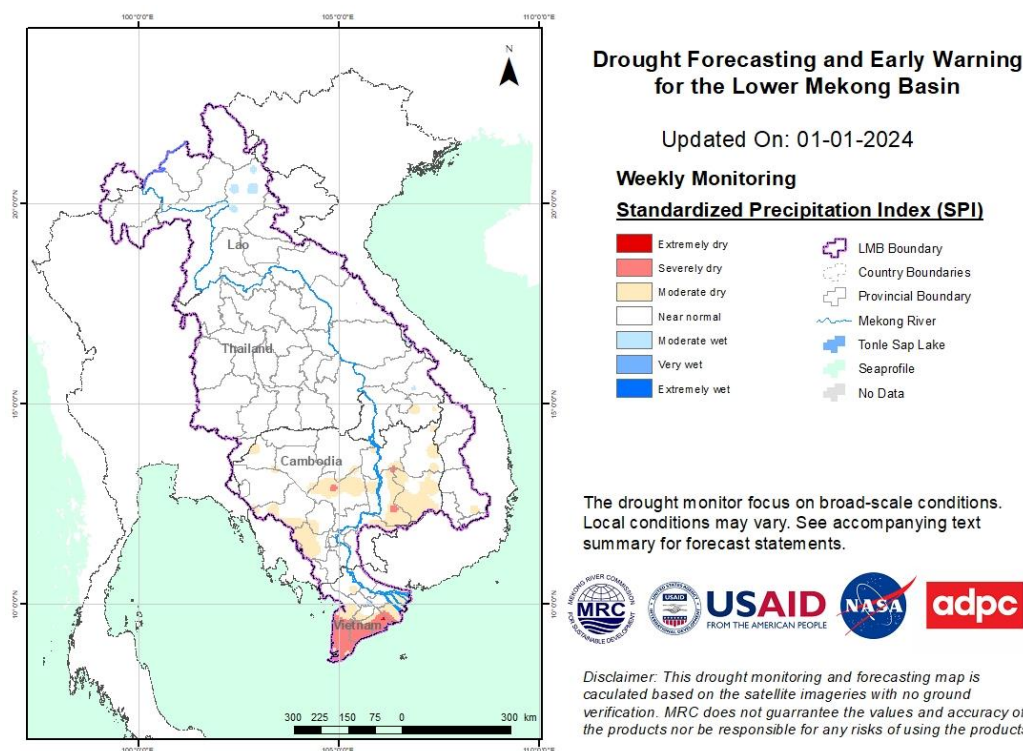
## 5 Drought Monitoring in the Lower Mekong Basin

### Weekly drought monitoring from Dec 25-Jan 1

Drought monitoring data for 2024 are available from Monday to Sunday every week; thus, the reporting period is normally delayed by one day compared to Flood and Flash Flood reports. We adopt the Index of Soil Water Fraction (ISWF) data obtained from FFGS to represent soil moisture of agricultural indicator for both dry and wet seasons.

- **Weekly Standardised Precipitation Index (SPI1)**

Meteorological drought condition of the LMB from Dec 25-Jan 1, as shown in [Figure 11](#), was normal in the north and middle parts of the region and moderately and severely dry in the southern part covering Banteay Meanchey, Pursat, Kampong Thom, Kampong Speu, Kampong Chhnang, Kratie, Stung Treng, Ratanakiri, Mondulakiri, Tboung Khmum, Kampot, Attapu, Dak Lak, An Giang, Kien Giang, Hau Giang, Ben Tre, Tra Vinh, Soc Trang, Bac Lieu, and Ca Mau. Ca Mau, Bac Lieu, Soc Trang, Tra Vinh, and Kien Giang were the driest provinces under meteorological drought.

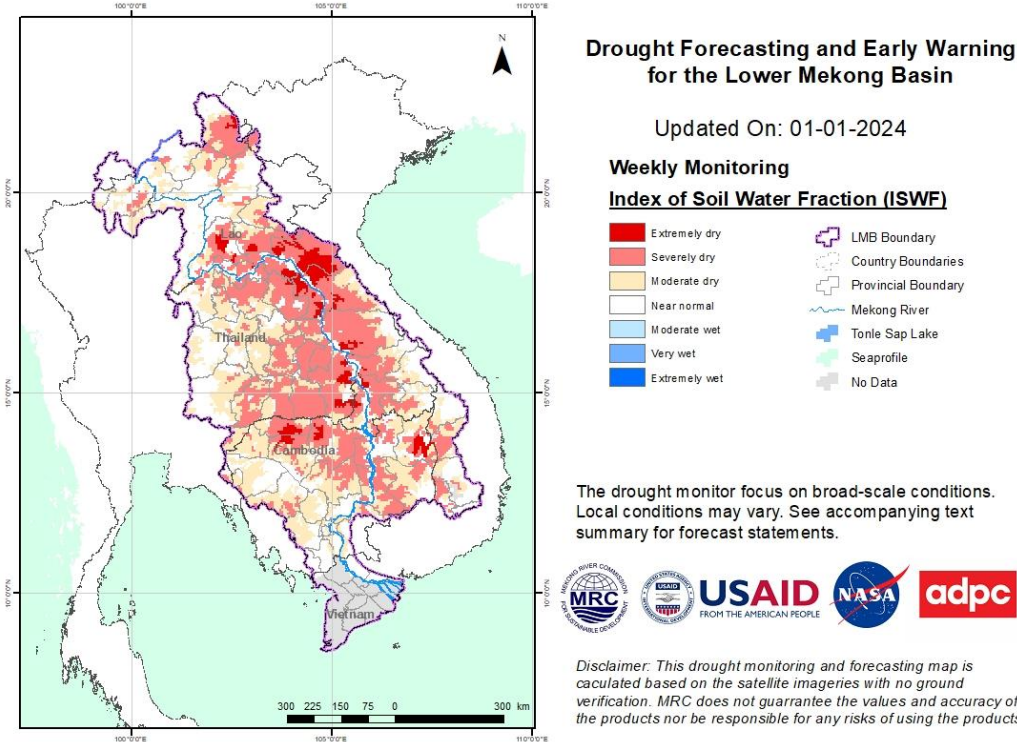


**Figure 14: Weekly standardised precipitation index from Dec 25 to Jan 1.**

- **Weekly Index of Soil Water Fraction (ISWF)**

Soil moisture conditions from Dec 25 to Jan 1, as displayed in [Figure 12](#), were severely dry from the north to the south due to absence of rainfall.

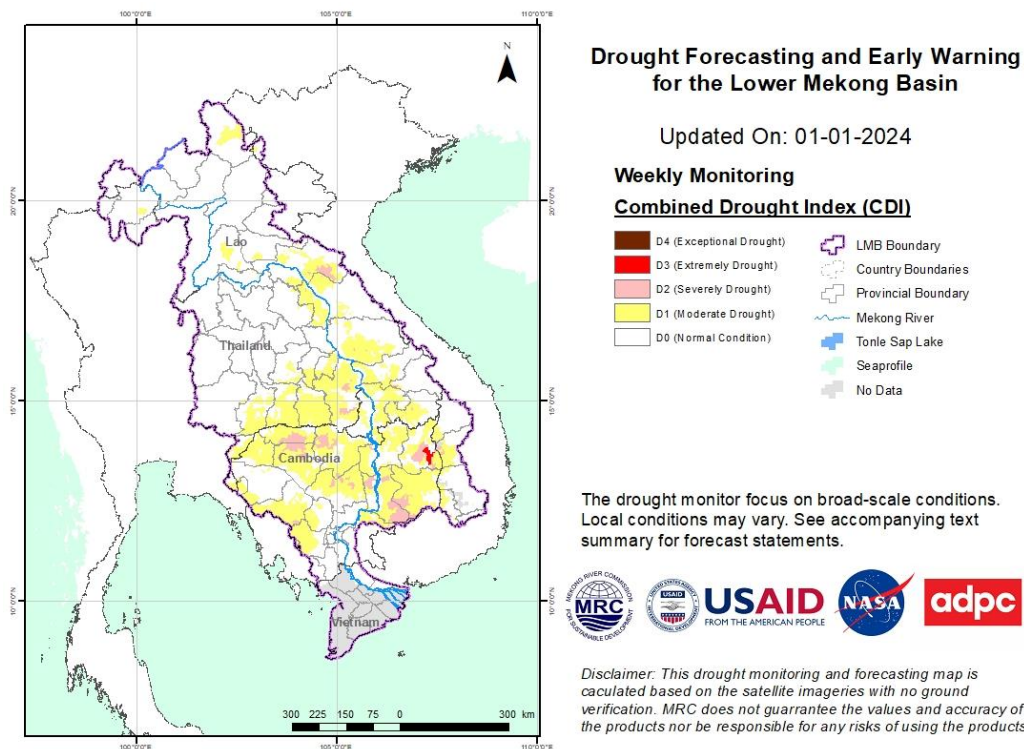
**Note:** The index of soil water fraction presents the current soil water fraction conditions compared with normal month; therefore, it normally shows extremely dry during dry season which is completely different from SPI that is standardized to its specific month of the years. However, this does not mean that the areas are threatened by agricultural drought as generally during transition period of wet and dry seasons and dry season only the irrigated areas are used for agricultural plantation.



**Figure 15: Weekly Index of Soil Water Fraction from Dec 25 to Jan 1.**

- Weekly Combined Drought Index (CDI)**

With the dry conditions of soil moisture, the combined drought indicator (displayed in [Figure 13](#)) reveals that during Dec 25-Jan 1, the LMB was facing from moderate to severe drought mainly in the middle and southern parts covering Phongsaly, Vientiane, Xaysomboun, Borikhamxay, Khammuane, Savanakheth, Saravane, Champasack, Attapeu, Xekong, Bueng Kan, Nakhon Phanom, Roi Et, Yasothon, Amnat Charoen, Si Saket, Surin, Buri Ram, Banteay Meanchey, Preah Vihear, Kampong Thom, Stung Treng, Ratana Kiri, Otdar Meanchey, Pailin, Siem Reap, Pursat, Battambang, Kratie, Ratanakiri, Mondulkiri, Prey Veng, Kampong Cham, Kampong Speu, Tbong Khmum, Gia Lai, and Kon Tum. The drought phenomenon was caused by over dried soil moisture which is considered normal during dry season.



**Figure 16: Weekly Combined Drought Index during Dec 25-Jan 1.**

More information on Drought Forecasting and Early Warning (DFEW) as well as the explanation is available here: <http://droughtforecast.mrcmekong.org/templates/view/our-product>. DFEW provides not only weekly monitoring and forecasting information but also a three-month forecast of drought indicators with seasonal outlook which are updated every month based on international weather forecast models. Details on drought forecast are described in section 6.4 of this report.

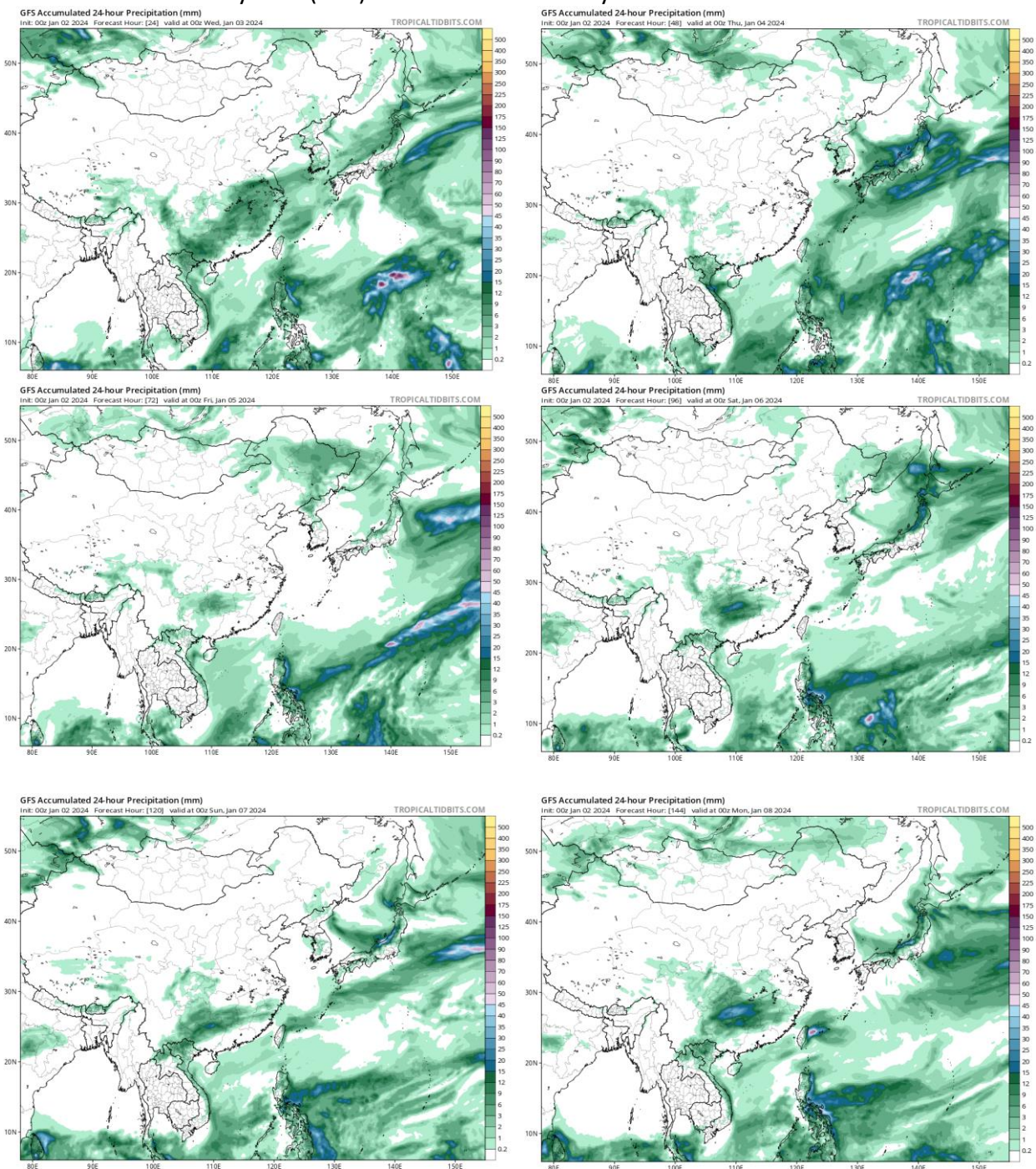


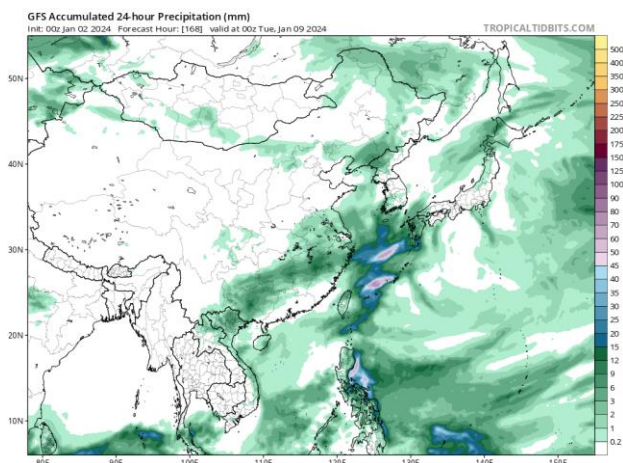
## 6 Weather and Water Level Forecast and Flash Flood Information

### 6.1 Weather and rainfall forecast

During 03 to 09 January, based on result from the Global Forecast System (GFS) model, no rain to light rain (0-10 mm/24h) is forecasted for the LMB area.

[Figure 17](#) shows accumulated rainfall forecast (24h) of the forecasting model using result from the Global Forecast System (GFS) from 03 to 09 January.





**Figure 17: Accumulated rainfall forecast (24 h) based on the result from the Global Forecast System (GFS)**

## 6.2 Water level forecast

### Chiang Saen and Luang Prabang

Based on December 31's weekly river monitoring bulletin, the weekly forecast water level at Chiang Saen in Thailand is expected to decrease from 2.07 m to 1.78 m in the next seven days. The trend of water levels at these stations will continue staying below its LTA.

For Luang Prabang in Lao PDR, the water level is likely increasing about 0.23 m during the same period. The current water level is about 2.39 m higher than its LTA and staying about 0.15 m lower than its historical maximum value. No precipitation is forecasted in the area.

### Chiang Khan, Vientiane-Nong Khai and Paksane

Water level at Chiang Khan station in Thailand is forecasted to be up about 0.10 m for the next seven days. At Vientiane in Lao PDR, water level will be also up in about 0.04 m while Nong Khai in Thailand will down about 0.08 m in the next seven days. At Paksane in Lao PDR, water level will be down due to some effect of low inflows from the upper catchments. No rainfalls are forecasted in the area due to air pressure dominating in the upper sub-catchments. The water levels here will continue lower than their LTA.

### Nakhon Phanom to Pakse

Water levels from Nakhon Phanom in Thailand to Pakse in Lao PDR will decrease from 0.01 to 0.25 m. Water levels at these stations will stay lower than their LTA levels. Next week no precipitation is forecasted in the area.

### Stung Treng to Kompong Cham/Phnom Penh to Koh Khel/Neak Luong

From Stung Treng on the Mekong River in Cambodia, the water level will likely go down about 0.09 m, while at Kratie it will be down about 0.45 m over the next seven days. For Kompong Cham, the water level will be down about 0.38 m and stay below than its LTA. No rainfall is forecasted for the area between Stung Treng and Kompong Cham during next week.

The water levels of the Tonle Sap Lake at Prek Kdam and Phnom Penh Port as well as at Phnom Penh's Chaktomuk on the Bassac River will down between 0.22 m and 0.41 m over the next seven days.

Water levels at most of the stations (excepted at Luang Prabang) will continue to stay lower than their LTA value, particularly in the upper and the lower parts of the region from the Chiang Khan to downstream in Phnom Penh, Koh Khel as well as from Tonle Sap in Prek Kdam to Phnom Penh Port, including the Tonle Sap Lake. no rainfall is forecasted for the low-lying area of Cambodia next week.

### **Tidal stations at Tan Chau and Chau Doc**

For Viet Nam's Tan Chau on the Mekong River and Chau Doc on the Bassac River, water levels will be moving down between their maximum, LTA and minimum values following daily tidal effects from the sea.

[Table 3](#) shows the weekly River Monitoring Bulletin issued on December 31. Results of the started weekly river monitoring bulletin are also available at [http://ffw.mrcmekong.org/bulletin\\_wet.php](http://ffw.mrcmekong.org/bulletin_wet.php). Tables for weekly updated water levels and rainfall at the Key Stations are presented in **Annex A**.

### **6.3 Flash Flood Information**

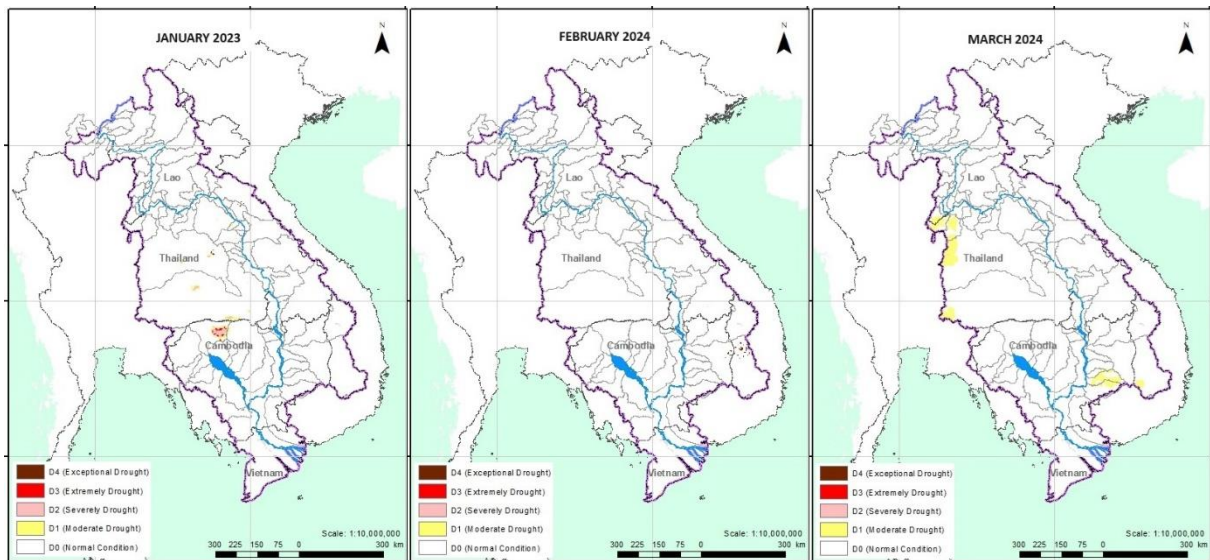
Flash flood events are not likely to happen in the LMB next week. However, local heavy rain in a short period of time might still be possible with unexpected short flash floods. During the dry season if extreme weather occurs, the information on flash flood guidance for the next one, three, and six hours is updated at <http://ffw.mrcmekong.org/ffg.php>.

Further detailed information on Flash Flood Information Warning, as well as on its explanation, is available for download [here](#).

### **6.4 Drought forecast**

There are several climate-prediction models with different scenarios in the upcoming months. The MRC's DFEWS adopts an ensemble model called the North America Multi-Model Ensemble (NMME) with a downscaling method to 5km resolution.

[Figure 18](#) below shows the Combined Drought Indicator (CDI) forecast for January, February and March 2024 over the LMB area.



**Figure 18. Monthly forecast of CDI for Jan, Feb and mar 2024.**

**Figure 18** above shows that in January and February the LMB is likely normal in most parts of the region. While in March, some moderate drought is likely taking place in Loei, Chaiyaphum, Nakhon Ratchasima, Kratie, and Ratanakiri provinces.

**Table 2. Weekly River Monitoring Bulletin.**



## Mekong Bulletin

Mekong River Commission Secretariat (MRCS)

Regional Flood and Drought Management Centre (RFDMC)

P.O. Box 623 #576, National Road #2, Chak Angre Krom, Meanchey, Phnom Penh, Cambodia

Tel: (855-23) 425353, Fax: (855-23) 425363, Email: floodforecast@mrcmekong.org

**Forecast period from: 02 January to 08 January 2024**

Date: 01 January 2024

LOCATION	Country	Observed Rainfall (mm)	Zero gauge above M.S.L (m)	Min water level against zero gauge (m)	Observed W. level against zero gauge (m)		Forecasted Water Levels (m)						
					31-Dec	01-Jan	02-Jan	03-Jan	04-Jan	05-Jan	06-Jan	07-Jan	08-Jan
Jinhong		0.0	-	-	535.84	535.29							
Chiang Saen		0.0	357.110	0.00	1.91	2.07	2.08	1.80	1.72	1.80	1.86	1.99	1.78
Luang Prabang		0.0	267.195	2.53	8.70	8.82	8.89	9.10	9.13	9.00	8.95	9.00	9.05
Chiang Khan		0.0	194.118	1.91	4.26	4.16	4.18	4.22	4.34	4.35	4.27	4.24	4.26
Vientiane		0.0	158.040	-0.28	1.64	1.61	1.55	1.58	1.63	1.75	1.78	1.69	1.65
Nongkhai		0.0	153.648	0.33	1.53	1.44	1.33	1.35	1.37	1.46	1.48	1.40	1.36
Paksane		0.0	142.125	0.10	2.74	2.75	2.70	2.60	2.62	2.64	2.70	2.71	2.66
Nakhon Phanom		0.0	130.961	0.18	1.90	1.85	1.84	1.80	1.70	1.68	1.71	1.77	1.80
Thakhek		0.0	129.629	1.38	3.25	3.22	3.23	3.20	3.10	3.08	3.11	3.17	3.21
Mukdahan		0.0	124.219	0.72	2.26	2.20	2.15	2.11	2.08	2.00	1.97	1.98	2.03
Savannakhet		0.0	125.410	-0.65	1.25	1.21	1.20	1.17	1.15	1.10	1.08	1.09	1.12
Khong Chiam		0.0	89.030	1.02	2.74	2.74	2.70	2.65	2.60	2.57	2.50	2.47	2.49
Pakse		0.0	86.490	0.03	1.62	1.70	1.71	1.67	1.63	1.60	1.56	1.54	1.55
Stung Treng		0.0	36.790	0.32	3.08	3.01	3.02	3.05	3.03	3.00	2.97	2.95	2.92
Kratie		0.0	-1.080	3.06	8.24	8.07	7.90	7.84	7.84	7.80	7.75	7.68	7.62
Kompong Cham		0.0	-0.930	0.65	3.80	3.68	3.55	3.44	3.41	3.39	3.36	3.34	3.30
Phnom Penh (Bassac)		0.0	-1.020	1.58	3.42	3.38	3.31	3.24	3.19	3.17	3.14	3.13	3.10
Phnom Penh Port		nr	0.000	0.14	2.37	2.32	2.25	2.18	2.13	2.09	2.06	2.03	2.01
Koh Khel		0.0	-1.000	1.52	3.12	3.14	3.10	3.06	3.03	3.00	2.98	2.95	2.92
Neak Luong		0.0	-0.330	0.81	2.32	2.37	2.31	2.25	2.20	2.17	2.14	2.10	2.08
Prek Kdam		0.0	0.080	0.58	2.85	2.84	2.76	2.69	2.61	2.56	2.51	2.47	2.43
Tan Chau		nr	0.000	-0.37	1.21	1.02	0.91	0.81	0.73	0.67	0.63	0.60	0.58
Chau Doc		nr	0.000	-0.60	1.40	1.16	0.94	0.79	0.69	0.62	0.58	0.55	0.53

**REMARKS:**

- : not available.
- \*: reference stations without forecast.
- nr: no rain.

River Flood Forecaster

KHEM Sothea

**NOTE:** Discharge at Luang Prabang may be influenced by hydropower operations (at both upstream and downstream).  
For more info, please refer to this link:  
<http://www.mrcmekong.org/>; [http://ffw.mrcmekong.org/bulletin\\_wet.php](http://ffw.mrcmekong.org/bulletin_wet.php); <http://ffw.mrcmekong.org/reportflood.php>

## 7 Summary and Possible Implications

### 7.1 Rainfall and its forecast

This week, no rainfall was observed in the stations along the Mekong River. Compared with last week's month, the rainfall this week was considered no rain in the lower Mekong Basin.

Based on the forecasted satellite data, rainfall is forecasted for some areas of the LMB with the value range from 01.00 mm to 20.00 mm for the next seven days. The forecasting model using CHIRPS-GEFS data, moreover, shows average rainfall (<20 mm) is likely to take place in the Mekong region from 01 to 06 January 2024.

### 7.2 Water level and its forecast

The MRC's observed water level (WL) at Jinghong showed fluctuated level from 535.56 m to 536.84m between 19 and 25 December 2023 (recorded on 7:00 am) while the outflow varied from 1,050.00 m<sup>3</sup>/s to 1,250.00 m<sup>3</sup>/s between 26 and 31 Dec 2023.

Mekong water levels this week remain as normal condition based on the PMFM indicators— with 1 out of 22 stations have water levels higher than their long-term average. In general, this hydrological condition is influenced by the inflows from the upper Mekong River in China and dam operations in the tributaries of the Lower Mekong River Basin.

Stay updated with our river monitoring and forecasting to better prepare for flood and drought events. Find more details at <https://www.mrcmekong.org/>.

Up to 31 December 2023, the flow volume of the Tonle Sap Lake is lower than its LTA (about 87%). From next week, the flow is expected to be decreasing due to no rainfall is predicted in the inflow catchments of the Tonle Sap Lake.

From Stung Treng to Kratie, the water levels will most likely go down, while at Kompong Cham they will also go down. The water levels – at Neak Luong on the Mekong River, from Prek Kdam to Phnom Penh Port on the Tonle Sap, and from Chaktomuk to Koh Khel on the Bassac – are forecasted to go down and stay below their LTA.

The situation in Tan Chau on the Mekong River and Chau Doc on the Bassac River is expected to remain fluctuating. In Tan Chau and Chau Doc, the fluctuation of water levels will move lower than their LTA value during the monitoring period, which will **considered normal**.

Since the third week of October 2023, water levels across most monitoring stations in the LMB have decreased due to the low-average rainfall but still staying higher than their LTA value (at Vientiane, Khong Chiam, Pakse and Koh Khel). The preliminary analysis of the hydrological conditions in the LMB over July–December 2020 and from November 2020 to May 2021 was done as [Situation Report](#), which can be used as reference for the trend of water level and flows of the Mekong River Basin.

The contribution to the Mekong River's flow from the UMB in China (Yunnan component) is about 16% by the time the river discharges through the Mekong Delta into the Sea. By far the

major contribution comes from the two major 'left-bank' (Eastern) tributaries between Vientiane – Nakhon Phanom and Pakse – Stung Treng, which together contribute more than 40% of the flows.

### **7.3 Flash flood and its trends**

With the predicted of rainfall for the coming week as mentioned earlier in [section 6.1](#), major flash floods are not likely to happen in the LMB.

### **7.4 Drought condition and its forecast**

During Dec 25-Jan 1, the LMB was facing from moderate to severe drought mainly in the middle and southern parts covering Phongsaly, Vientiane, Xaysomboun, Borikhamxay, Khammuane, Savanakheth, Saravane, Champasack, Attapeu, Xekong, Bueng Kan, Nakhon Phanom, Roi Et, Yasothon, Amnat Charoen, Si Saket, Surin, Buri Ram, Banteay Meanchey, Preah Vihear, Kampong Thom, Stung Treng, Ratana Kiri, Otdar Meanchey, Pailin, Siem Reap, Pursat, Battambang, Kratie, Ratanakiri, Mondulkiri, Prey Veng, Kampong Cham, Kampong Speu, Tbong Khmum, Gia Lai, and Kon Tum. The drought phenomenon was caused by over dried soil moisture which is considered normal during dry season.

In January and February the LMB is likely normal in most parts of the region. While in March, some moderate drought is likely taking place in Loei, Chaiyaphum, Nakhon Ratchasima, Kratie, and Ratanakiri provinces.

**Annex A: Tables for weekly updated water levels and rainfall at the Key Stations**

Table A1: Weekly observed water levels

2023	Jinghong	Chiang Saen	Luang Prabang	Chiang Khan	Vientiane	Nongkhai	Paksane	Nakhon Phanom	Thakhek	Mukdahan	Savannakhet	Khong Chiam	Pakse	Stung Treng	Kratie	Kompong Cham	Phnom Penh (Bassac)	Phnom Penh Port	Koh Khel	Neak Luong	Prek Kdam	Tan Chau	Chau Doc
26-12-2023	535.56	1.86	9.08	4.52	1.64	1.42	2.69	1.78	3.12	2.20	1.18	2.79	1.70	3.08	8.08	3.69	3.37	2.32	3.06	2.68	3.04	1.67	1.85
27-12-2023	535.73	1.95	9.06	4.59	1.63	1.50	2.80	1.77	3.06	2.17	1.16	2.71	1.66	3.08	8.24	3.78	3.43	2.38	3.10	2.63	3.01	1.71	1.91
28-12-2023	535.60	1.95	9.00	4.59	1.62	1.55	2.84	1.85	3.14	2.14	1.19	2.65	1.55	3.10	8.26	3.80	3.44	2.39	2.99	2.63	2.99	1.68	1.91
29-12-2023	535.59	2.03	8.64	4.51	1.64	1.60	2.81	1.95	3.24	2.25	1.25	2.66	1.58	3.12	8.29	3.84	3.45	2.40	3.10	2.42	2.97	1.60	1.83
30-12-2023	535.81	2.00	8.68	4.49	1.68	1.58	2.82	1.74	3.23	2.33	1.30	2.69	1.60	3.10	8.29	3.80	3.46	2.41	3.14	2.38	2.93	1.50	1.70
31-12-2023	535.84	1.91	8.70	4.26	1.64	1.53	2.74	1.90	3.25	2.26	1.25	2.74	1.62	3.08	8.24	3.80	3.42	2.37	3.12	2.32	2.85	1.21	1.40
01-01-2024	535.29	2.07	8.82	4.16	1.61	1.44	2.75	1.85	3.22	2.20	1.21	2.74	1.70	3.01	8.07	3.68	3.38	2.32	3.14	2.37	2.84	1.02	1.16

Table A2: Weekly observed rainfall

2023	Jinghong	Chiang Saen	Luang Prabang	Chiang Khan	Vientiane	Nongkhai	Paksane	Nakhon Phanom	Thakhek	Mukdahan	Savannakhet	Khong Chiam	Pakse	Stung Treng	Kratie	Kompong Cham	Phnom Penh (Bassac)	Phnom Penh Port	Koh Khel	Neak Luong	Prek Kdam	Tan Chau	Chau Doc	
26-12-2023	0	0	0	0	0	0	0	0	0	0	0	0	0	0	0	0	0	0	0	0	0	0	0	0
27-12-2023	0	0	0	0	0	0	0	0	0	0	0	0	0	0	0	0	0	0	0	0	0	0	0	0
28-12-2023	0	0	0	0	0	0	0	0	0	0	0	0	0	0	0	0	0	0	0	0	0	0	0	0
29-12-2023	0	0	0	0	0	0	0	0	0	0	0	0	0	0	0	0	0	0	0	0	0	0	0	0
30-12-2023	0	0	0	0	0	0	0	0	0	0	0	0	0	0	0	0	0	0	0	0	0	0	0	0
31-12-2023	0	0	0	0	0	0	0	0	0	0	0	0	0	0	0	0	0	0	0	0	0	0	0	0
01-01-2024	0	0	0	0	0	0	0	0	0	0	0	0	0	0	0	0	0	0	0	0	0	0	0	0
<b>Sum</b>	0.0	0.0	0.0	0.0	0.0	0.0	0.0	0.0	0.0	0.0	0.0	0.0	0.0	0.0	0.0	0.0	0.0	0.0	0.0	0.0	0.0	0.0	0.0	0.0





## Mekong River Commission Secretariat

P. O. Box 6101, 184 Fa Ngoum Road, Unit 18 Ban Sithane Neua, Sikhottabong District, Vientiane 01000, Lao PDR  
Tel: +856 21 263 263. Fax: +856 21 263 264 [www.mrcmekong.org](http://www.mrcmekong.org)

© Mekong River Commission 2020